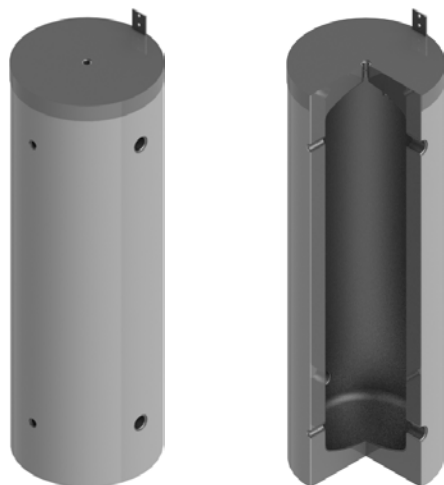


**Pufferspeicher für Wärmepumpe**  
**Buffer storage tanks for heat pump**  
**Ballon tampon pour pompe à chaleur**  
**Accumulatori tampone per pompa di calore**  
**PU 50 – 100**

**sigmatic**

**EnEV 730.02**  
**ErP 812/2013**  
**ErP 814/2013**  
**CE**



**Bauart**  
**Design | Structure | Struttura**

Die Speicher werden aus hochwertigem Stahl nach EN 10025 gefertigt.

**EN** The storage tanks are made from high quality steel in accordance with EN 10025.

**FR** Les ballons sont fabriqués en acier de grande qualité, selon la norme EN 10025.

**IT** Gli accumulatori sono realizzati in acciaio pregiato secondo la norma EN 10025.

<b>Betriebsdruck / Prüfdruck</b> Operating pressure / test pressure   Pression de service / Pression test   Pressione d'esercizio / Pressione di collaudo	3 bar / 4.5 bar
<b>Einsatzgebiet</b> Application   Application   Applicazione	18°C – 95°C

**Lieferumfang**  
**Delivery | Livraison | Consegna**

<b>Bedienungsanleitung</b> Operation manual   Mode d'emploi   Istruzioni per l'uso	1 x
---	-----



### Schutz vor Korrosion

Anti-corrosion protection | Protection contre la corrosion | Protezione anticorrosiva

Innen sind die Speicher unbehandelt. Aussen sind die Speicher mit PU-Schaum fix geschäumt.

**EN** The storage tanks are untreated on the interior. On the exterior the storage tanks are foamed with polyurethane foam.

**FR** À l'intérieur, les réservoirs ne sont pas traités. À l'extérieur, ils sont recouverts de mousse fixe.

**IT** L'interno degli accumulatori non è trattato. All'esterno gli accumulatori presentano una copertura di schiuma PU fissa.

### Isolierung

Insulation | Isolation | Isolamento

#### PU-Hartschaum

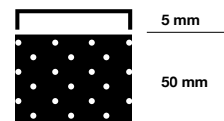
60 mm PU-Hartschaum fix geschäumt. Skaimantel 5 mm mit Reissverschluss vormontiert, inklusive Rosetten und Abdeckhaube. Brandschutzklasse B2. Silber. Weitere Farben nach Absprache.

**EN** Rigid polyurethane foam  
60 mm rigid polyurethane foam. Skai jacket 5 mm with zip preassembled, including cover plates and hood. Fire-resistance rating B2. Silver. Other colours on request.

**FR** Mousse solidifiée PU  
60 mm de mousse dure PU Enveloppe en skai de 5 mm préinstallée avec fermeture à glissière, y compris rosettes et capot. Classe allemande de protection incendie B2. Argent. Autres couleurs après concertation.

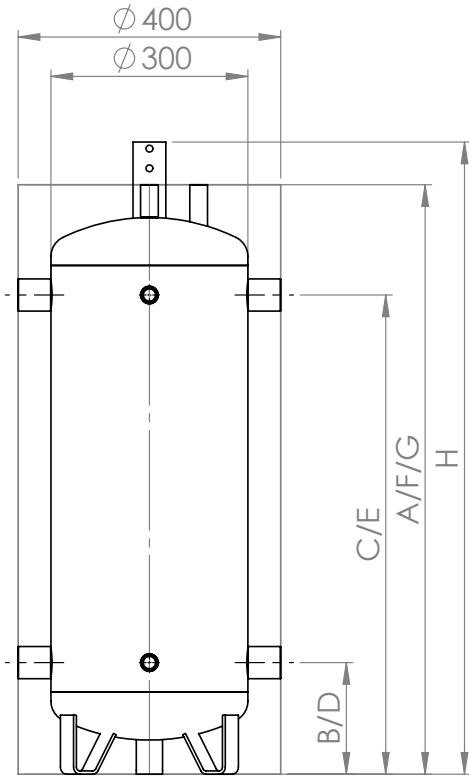
**IT** Schiuma PU rigida  
60 mm di schiuma rigida di poliuretano fissa. Mantello in skai da 5 mm pre-assemblato con cerniera, dotato di rosette e calotta di copertura. Classe di resistenza antincendio B2. Argento. Altri colori su richiesta.

≤ 600 L  
PU-Hartschaum  
B2; λ = 0.026 W/(mK)

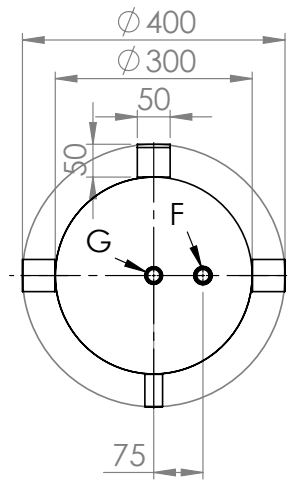


**Pufferspeicher für Wärmepumpe**  
**Buffer storage tanks for heat pump**  
**Ballon tampon pour pompe à chaleur**  
**Accumulatori tampone per pompa di calore**  
**PU 50 – 100**







50 – 100



50 – 100



50 – 100

	Verwendung Usage Utilisation Uso	Dimension Dimension Dimension Dimensione	50	80	100
	Inhalt Capacity   Contenance   Contenuto	l	51	75	91
	Kippmass Tilted dimension   Cote de basculement   Altezza in raddrizzamento	mm	911	1259	1507
A	Höhe mit Isolierung Height with insulation   Hauteur avec isolation   Altezza con isolamento	mm	900	1250	1500
B	Rücklauf Return   Retour   Ritorno	 - mm	170	170	170
		G"	1 ¼"	1 ¼"	1 ¼"
C	Vorlauf Supply   Alimentation   Mandata	 - mm	730	1080	1330
		G"	1 ¼"	1 ¼"	1 ¼"
D	Fühler Sensor   Sonde   Sensor	 - mm	170	170	170
		G"	½"	½"	½"
E	Fühler Sensor   Sonde   Sensor	 - mm	730	1080	1330
		G"	½"	½"	½"
F	Fühlerhülse Sensor sleeve   Manchon de capteur   Manicotto sensore	 - mm	900	1250	1500
		G"	½"	½"	½"
G	Entlüftung Vent   Purge   Sfiato	 - mm	900	1250	1500
		G"	½"	½"	½"
H	Höhe Aufhängung Height   Hauteur   Altezza	mm	965	1315	1565
	Isolierung Insulation   Isolation   Isolamento		50 mm fix eingeschäumt Fixed with foam   Enrobage mousse fixe   Schiuma rigida fissa		
	Wärmeverlust Heat losses   Pertes thermiques   Perdita di calore	kWh/24h	0.95	1.04	1.13
	ErP-Klasse ErP class   Classe ErP   Classe ErP		B	B	B
	Gewicht Weight   Poids   Peso	kg	20	25	30
	Art.Nr. 200101... Part no.   Réf.   Art.n.		0050	0080	0100